



Device Manager

Manage, monitor, and update your connected devices at scale.

1M+

Devices Managed

99.99%

Availability

Maximize the Value of Your Hardware

Device Manager is our cloud-based Device Management Platform that provides **visibility and control** over your Digital Matter devices and ensures that they continue to perform at their best for longer.

[> View Overview Video](#)

[> View Tutorial Videos](#)



Customize for Your Use Case

Take control of over 200 device settings to fine-tune performance for your use case.



Monitor and Troubleshoot Quickly

Minimize downtime and improve end-customer satisfaction.



Keep Devices Up-to-Date Remotely

Update device settings, firmware, and security enhancements over-the-air.



Maximize Performance

Utilize advanced functionality such as GNSS Aiding Data to improve device performance.

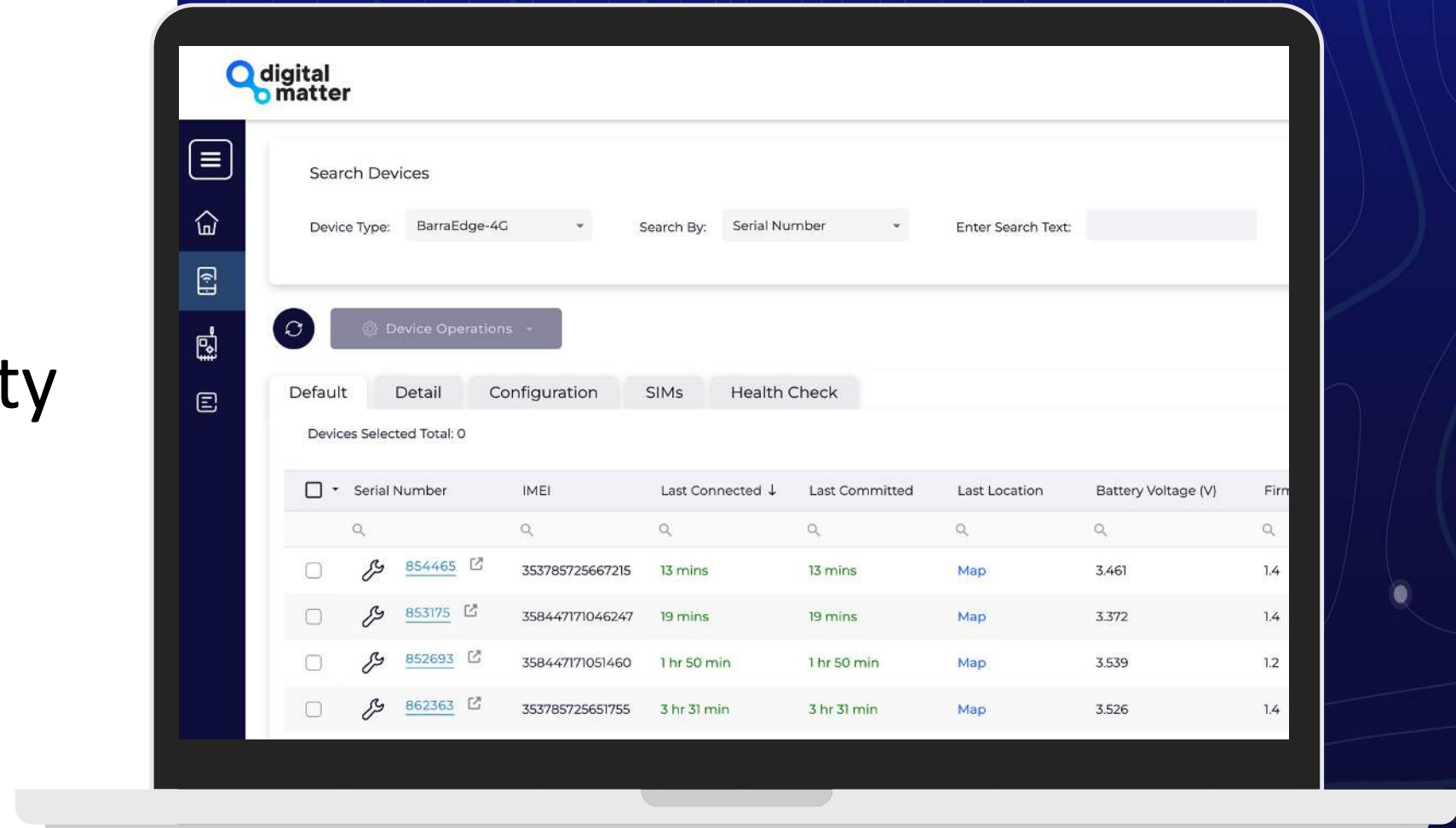


Secure Your Solution and Scale

AES-256 Encryption and Authentication keeps data secure.

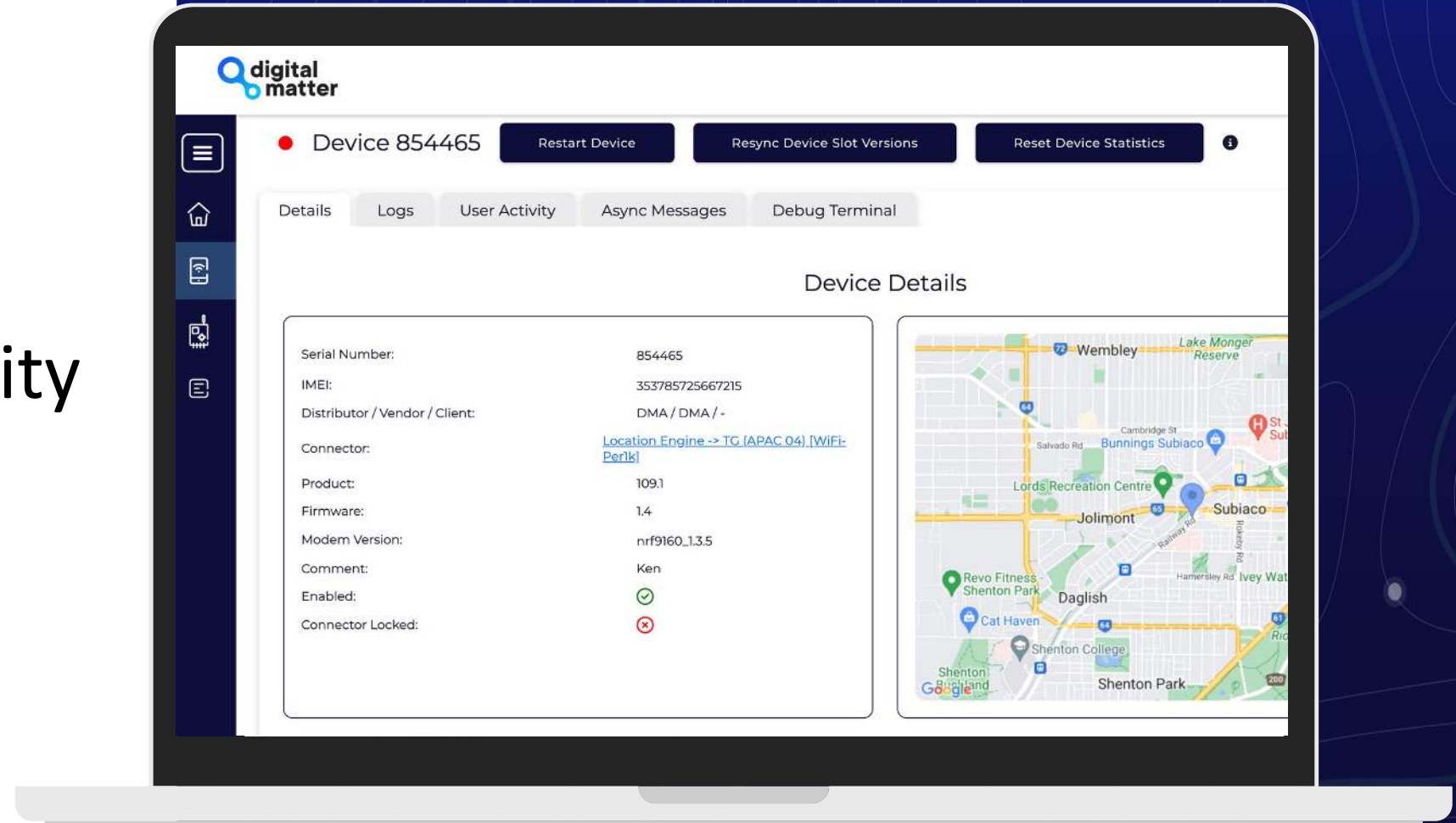
Complete Visibility

View all your devices and make updates in bulk.



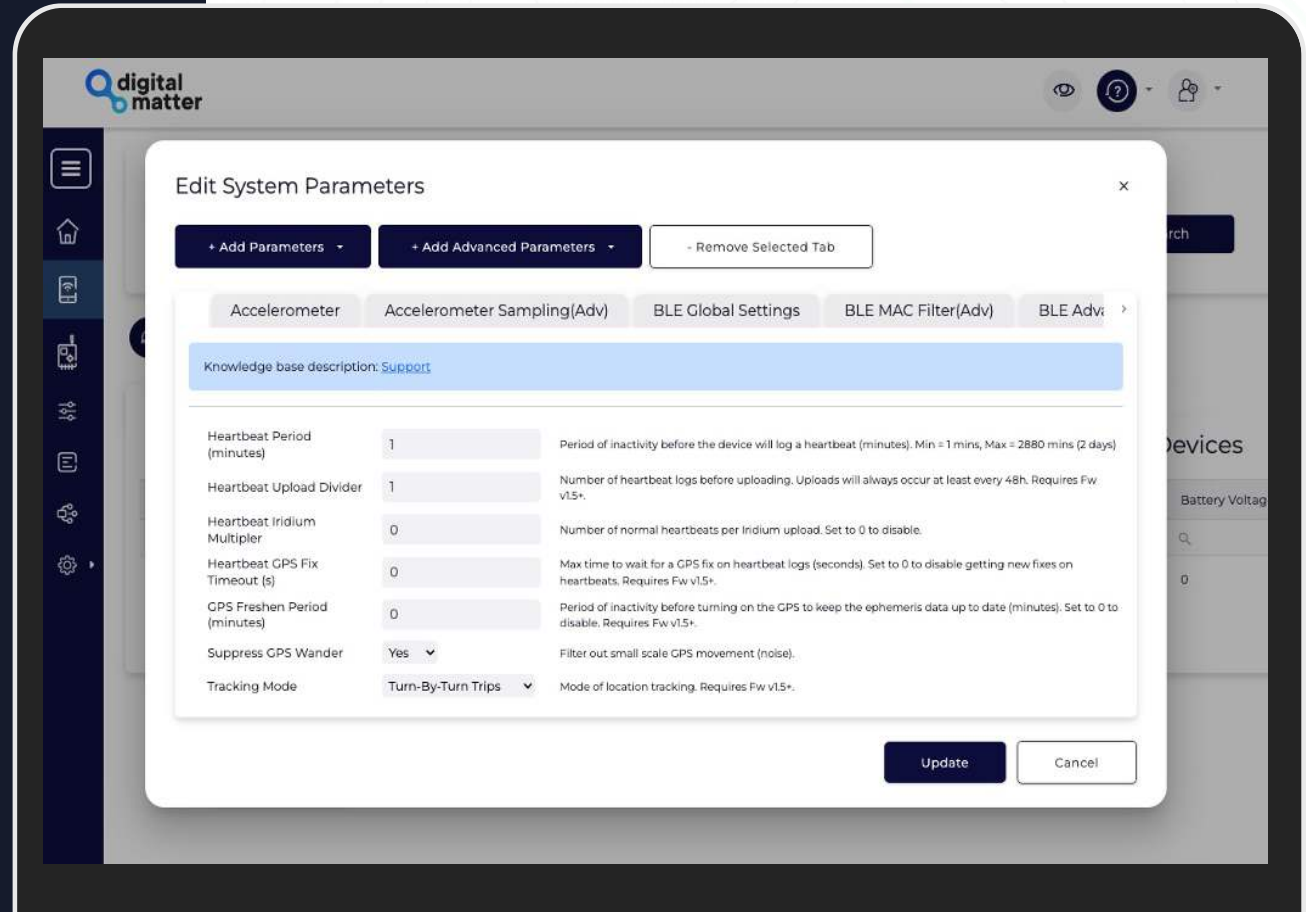
Device-Level Clarity

Quickly debug and resolve issues at the individual device level.



Take Control of Over 200 Device Settings

- Digital Matter devices are highly configurable via Device Manager, providing control over a robust range of settings to fine-tune performance for your specific use case.
- Templatize parameters to apply settings in bulk and remotely push updates, ensuring your hardware adapts to the evolving needs of your deployments.



We provide access to a comprehensive range of device parameters, giving you the flexibility to rapidly test, optimize, and deploy.



Tracking Behaviors

Update Rate, Tracking Mode, Movement Detection, Accelerometer Settings, Scheduled Uploads, Inactivity Timer



Condition Monitoring

Impact Detection, Tip Detection, Rotation Counting, Run Hour Monitoring



Fleet Management

Accident Logging, Driver ID, Harsh Driving, Driver Fatigue Alerts, Idle Monitoring, Speed Reporting, Immobilization, Geofence Behavior, In-Cab Feedback



Inputs/Outputs and Peripherals

Analog, Digital, I/O Thresholds and Alerts, Upload Behavior Based on I/O Values or Events, Task Management, Universal Peripheral Integrations, Peripheral Control



Bluetooth®

Universal Tag and Sensor Integration, Bluetooth Scanning Frequency and Upload Behavior, Update on Sensor Values or Events



Recovery and Tampering

Live Tracking and Logging Intervals, After-Hours Movement, Tamper Alerts



Location and Accuracy

Accuracy Requirements and Filtering, GPS Timeout Behavior, Location Technology Types



Network Settings

APN Settings, Network Selection and Preferences, Band Selection or Masking, Network Registration Timeouts

Monitor and Troubleshoot Quickly

- Minimize downtime and improve end-customer satisfaction.
- View critical diagnostic data to debug and resolve issues at the individual device level.
- Enable device debug logging to facilitate remote analysis of problem behavior and simplify troubleshooting.

Set Device Debug Flags ×

i Change the debug level for different firmware modules. This will change way the module produces debug logs, providing insight into each modules operation.

Log Level Info: maximum information; highest data usage; only use this level if you are debugging a problem (eg. movement threshold crossed; starting trip)

Log Level Warning: informative warnings; low to moderate data usage depending on errors encountered; provides information on retries and everyday errors (eg. SMS read timeout)

Log Level Severe: severe issues are logged; low data usage; provides information on errors that significantly affect the device operations (eg. commit failure)

Log Level Critical: only critical issues are logged; lowest data usage; logs are only created on events critical to the systems operations (eg flash memory failure)

Choose an **expiry date** for this setup. Upon reaching the expiry date, the server will instruct the device to revert all modules to Log Level Severe.

21 Nov 2023 06:08:10 📅

Set All Info **Set All Warning** **Set All Severe** **Set All Critical**

General	GPS	GSM	Control
Info ▾	Info ▾	Info ▾	Info ▾
Accel	NVM	Slot Manager	ADC
Info ▾	Info ▾	Info ▾	Info ▾
GPIO	Device Data	Module 10	Module 11

Keep Devices Up-to-Date Remotely

- Update device settings, firmware, and security enhancements over-the-air **without physically plugging into, retrieving or replacing devices.**
- Provision devices faster with less room for error.
- Scale updates to many devices simultaneously.
- Enhance customer satisfaction by delivering a continuously optimized product.



Enhance Device Performance

- GNSS Aiding data is securely synced with devices, reducing time to first fix (TTFF) and increasing battery life.
- Leverage robust asynchronous messaging architecture and API to send commands to devices such as activate a vehicle immobilizer or device recovery mode.
- Utilize advanced functionality such as syncing authorized driver lists and geofences to the device.



GNSS Aiding Data



Almanac File Updates



ASYNC Messaging
Architecture



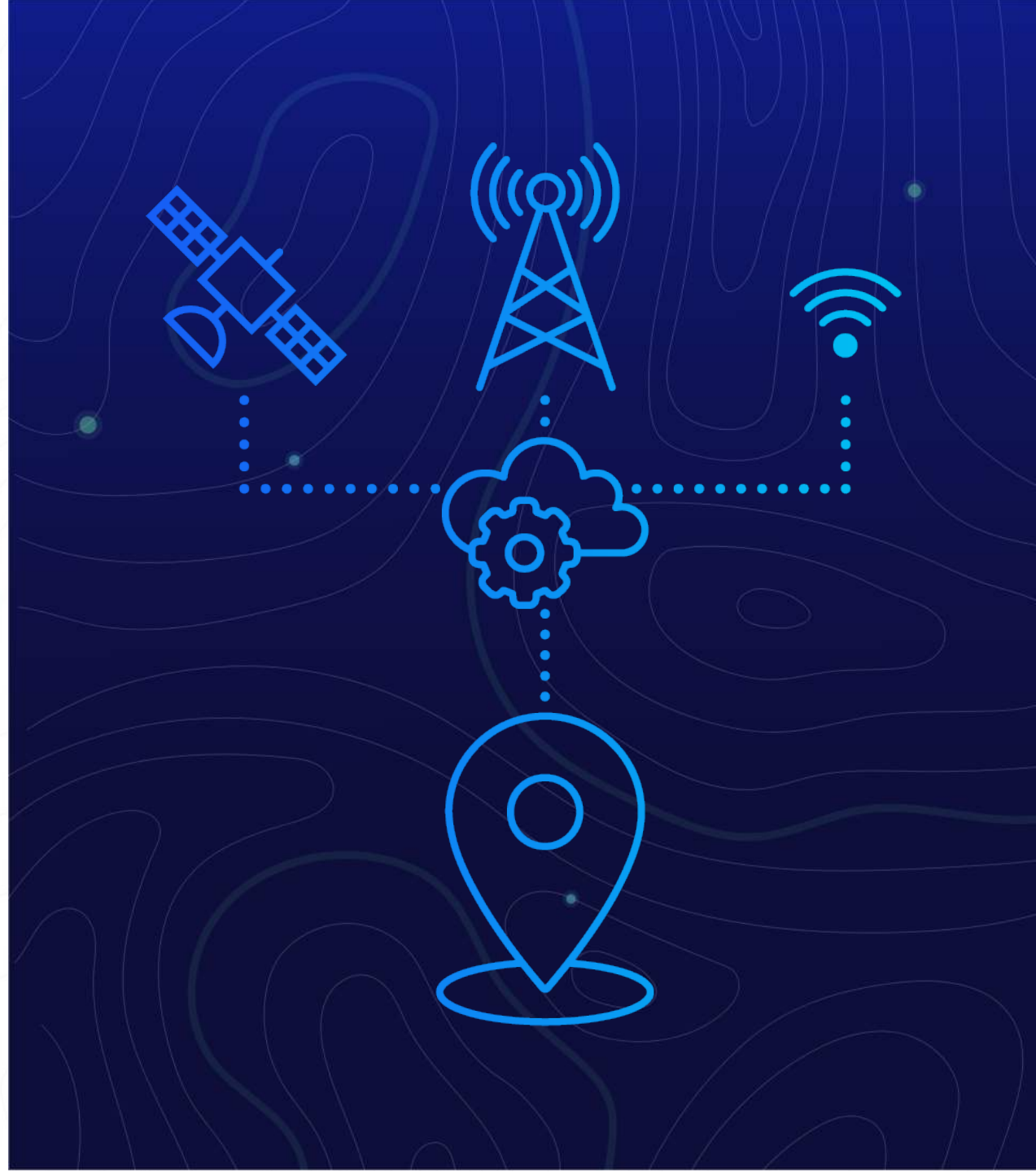
Advanced Functionality

Unlock the Power of Edge Devices

Modern IoT devices leverage multiple location technologies that require server-side processing and lookups.

Location Engine smartly resolves this raw data into location information – making your integration easy.

- Resolve GNSS scan data to locations
- Perform public Wi-Fi AP lookups and location resolution
- Cell-ID location lookups using single cell and multi-cell
- Private Wi-Fi AP and Bluetooth beacon location lookups
- Intelligent filtering algorithms
- Enable and disable location services and select between providers to optimize costs



Manage Users & Access Control

- Create and manage user profiles, including defining what users can see and what they can control according to their roles.
- Multi-factor Authentication offers a higher level of security for preventing unauthorized access.
- **Single Sign-On (SSO)** offers secure and centralized system access management to ensure operational security and compliance.

Create User ×

Distributor

Vendor

Client

Name

Surname

Email address

Mobile

Enable 2FA

Billing Detail

Client Creator

Config Only Manager

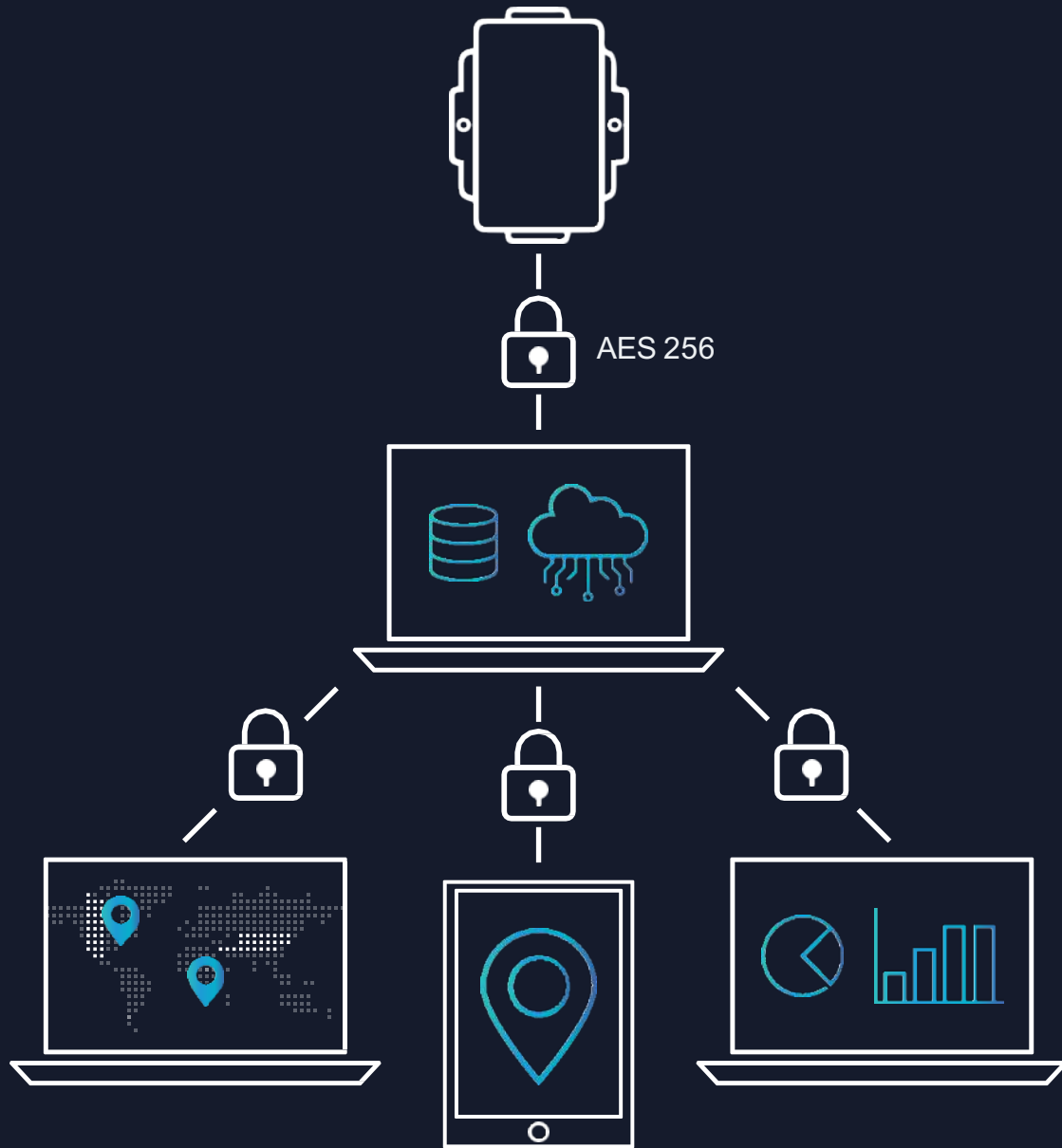
Connection Manager

Device Manager

Driver Manager

My Shipments

Template Manager



Send Data Anywhere with Integration and API Control

- Send data to your server through HTTPS or TCP.
- Avoid the need to create your own scalable TCP socket service for managing numerous connections.
- Monitor live server logs and past interactions, including responses and errors, for integration troubleshooting.
- Easily configure device data forwarding to multiple endpoints for viewing in various systems.
- Perform various functions through API calls, allowing third-party servers to automate device control and provisioning.

Reduce On-Site Install Errors with **Remote Installer**

- The Installer Page allows for quick health checks during device installation to verify device performance.
- Remotely confirm connection, last GPS fix, battery level, status of inputs/outputs, and more.



Installer Device Check

Device Serial Number

394004

Find

Refresh

Device Type

YabbyEdge

Last Communication 


Now (19 Dec 2023 03:26:27 UTC)

Last Commit 


Now (19 Dec 2023 03:26:27 UTC)

Last GPS Update 

Now (19 Dec 2023 03:26:23 UTC)

Battery Level 

4.809 V

External Power 

-

Technical Support and Configuration Guidance

By leveraging Device Manager, our support team can analyze your device logs and promptly address queries.

- Expert and expediated debugging.
- 'Best practice' guidance for your deployments, covering installation, device configuration, SIM card and battery selections, and more!





Enterprise-Grade Security

Protect your customer's data in an evolving landscape.

Multi-Factor Authentication – Secure your access to the system

Data Security – AES-256 Encryption and Authentication

Compliance - Audited against the latest industry standards

Encryption Key Management – Industry Standard Generation and Storage

Continuous Security Testing - Regular Penetration Testing and Vulnerability Scans

Timely Updates - Implement Regular Security Updates



Let's Get Started

www.digitalmatter.com